

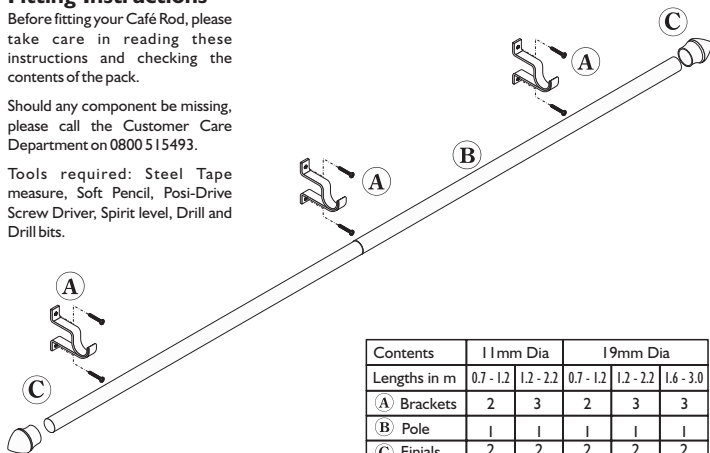
## Café Rod

### Fitting Instructions

Before fitting your Café Rod, please take care in reading these instructions and checking the contents of the pack.

Should any component be missing, please call the Customer Care Department on 0800 515493.

Tools required: Steel Tape measure, Soft Pencil, Posi-Drive Screw Driver, Spirit level, Drill and Drill bits.

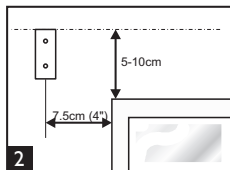
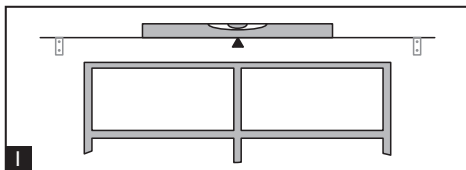


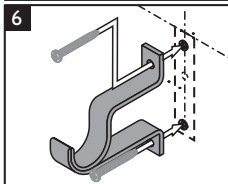
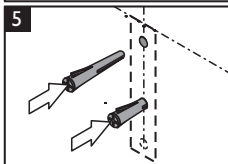
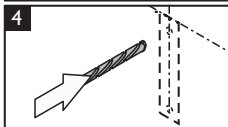
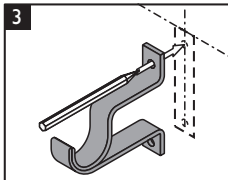
Contents	11mm Dia		19mm Dia		
Lengths in m	0.7 - 1.2	1.2 - 2.2	0.7 - 1.2	1.2 - 2.2	1.6 - 3.0
(A) Brackets	2	3	2	3	3
(B) Pole	1	1	1	1	1
(C) Finials	2	2	2	2	2

**Please ensure the correct wall plugs are used to suit your wall type.**

Use a spirit level to mark the top line of the brackets, Fig. 1. If you are mounting an additional intermediate bracket, space it evenly between the two outermost brackets.

Position rod up to the window and centralise over width to determine correct length. Remember to allow sufficient length either side to accommodate the curtains when opened and the finials when fitted.

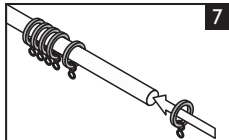




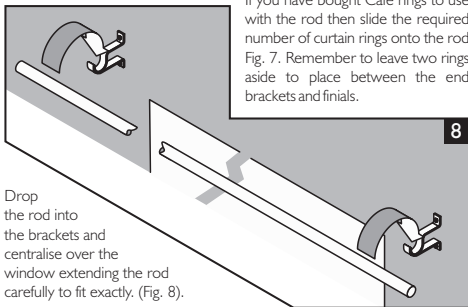
1. Position the brackets on the wall and mark the holes on the wall, Fig. 3.
2. Drill 2mm  $\varnothing$  pilot hole if mounting on to a wooden batten. If mounting directly on to a masonry or studded wall, Fig. 4 and 5, use the appropriate drill size (seek guidance from local builder's store if unsure).
3. Using the correct screws fix the brackets securely, Fig. 6. Alternative wall fixings should be used where necessary.
4. Repeat for all the brackets required.

To fit simple curtains onto the café rod slide the café rod through the hemmed loop at the top of the curtains.

You will need to slide the curtains on before the rod is mounted on the wall.

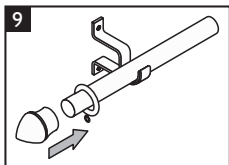


If you have bought Café rings to use with the rod then slide the required number of curtain rings onto the rod Fig. 7. Remember to leave two rings aside to place between the end brackets and finials.



Drop the rod into the brackets and centralise over the window extending the rod carefully to fit exactly, (Fig. 8).

For longer rod assemblies, you must fit a central bracket to support the rod. Adjust the length of the rod by sliding the inner rod in or out of the outer rod.



Push the finials onto the rods until they are firmly located on the rod.

Reposition the rod if necessary. Remember to position a ring between the bracket and finial if you are using curtain rings, Fig 9.

Curtains can now be fitted by slipping curtain hooks through the eyelets on the rings.

## Safety

- Only use a step ladder or stable chair to reach fixing height.
- Do not over reach. Always move the stepladder or chair, so that you are in a safe working position.
- Do not hold or lean on the track to support your weight.
- Use two people for the installation of longer tracks.
- Take care when using power tools, use of a Residual Current Device (RCD) is recommended.
- Always wear eye protection when drilling.
- Beware of hidden pipe runs and cables.

 **integra**

Integra Products Ltd, Eastern Avenue, Lichfield, Staffordshire WS13 7SB

• tel: +44 (0)1543 267100 • fax: +44 (0)1543 267105

• email: [cus.care@integra-products.co.uk](mailto:cus.care@integra-products.co.uk) • web: [www.integra-products.co.uk](http://www.integra-products.co.uk)